



ANTI-LIME MANIFOLDS

The anti-lime manifolds are used in plumbing centralized systems; and their characteristics make them particularly appropriate to reduce the effects of lime on the valves.

They are designed to shut off individually water supply to different consumer points to proceed to repair or replace.

The valves integrated into the anti-lime manifolds and are operated by a quarter turn system.

SERVICE CONDITIONS

Nominal pressure:	16 bar
Test pressure:	25 bar
Temperature range:	cold and hot water up to 95°C
Fluid:	water intended to human consumption and domestic hot water

MAIN CONSTRUCTIVE FEATURES

ANTI-LIME STEM-BALL

Stem and ball are manufactured in one piece made of special anti-lime polymer, which increases its resistance, allows a softer operation of the valve and blocks the lime adhesion on it.

QUARTER TURN SYSTEM

Quarter turn system is set by a stem-ball, which has the same characteristics of leak tightness and loss of pressure than traditional A-80 series.

LEAK TIGHTNESS

Internal leak tightness by means a supporting clip made of POM, which press against NBR seats, and external leak tightness by means double NBR seal.



PRODUCT RANGE

Code	I/O Measure	Ways
38010	3/4 MH	2 ways x G1/2
38020	3/4 MH	2 ways x M24
38110	3/4 MH	3 ways x G1/2
38120	3/4 MH	3 ways x M24

ANTI-LIME MODULAR MANIFOLDS

The anti-lime modular manifolds are used in plumbing centralized systems; and their characteristics make them particularly appropriate to reduce the effects of lime on the valves.

They are designed to shut off individually water supply to different consumer points to proceed to repair or replace.

The valves integrated into the anti-lime manifolds and are operated by a quarter turn system.

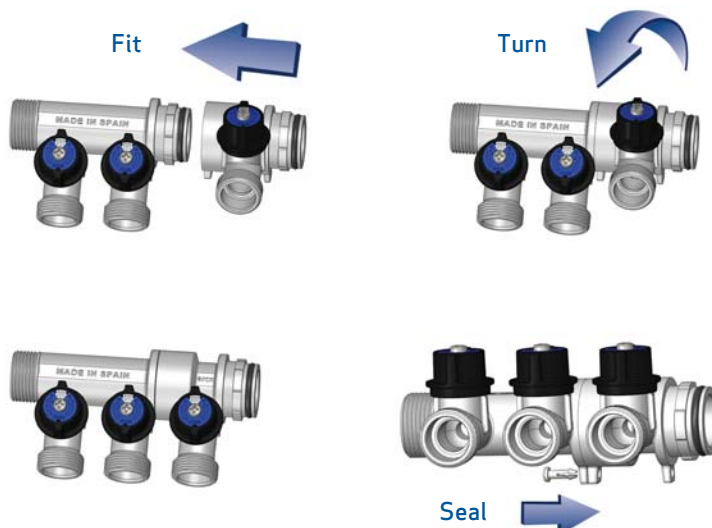


SERVICE CONDITIONS

Are the same as anti-cal manifolds (see previous page).

MAIN CONSTRUCTIVE FEATURES

In addition to the features of quarter turn system, seal and shaft-ball, incorporating the **SIT system** fast connection, which allows you to assemble the required manifold just fit, turn and seal the modules.



PRODUCT RANGE

Code	I/O Measure	Ways
38210	Central module	1 ways x M24
38310	Initial module 3/4H	2 ways x M24
38320	Final module 3/4M	2 ways x M24



Válvulas ARCO, s.l.
Avda. del Cid, 8
46134 Foios (Valencia / Spain)
www.valvulasarco.com

Commercial Export:
tel. (+34) 961 499 429
fax. (+34) 961 499 428
export@valvulasarco.es

